



SURECOAT
SYSTEMS

SureCoat Systems EZCoat

SINGLE COMPONENT POLYASPARTIC FLOOR COATING

DURABILITY, STRENGTH AND ADHESION FOR INDUSTRIAL AND RESIDENTIAL APPLICATIONS



Industrial Floor Applications



Residential Garage Floors

SURECOAT SYSTEMS

1091 N. Parker Street

Orange, CA 92867

www.surecoatsystems.com



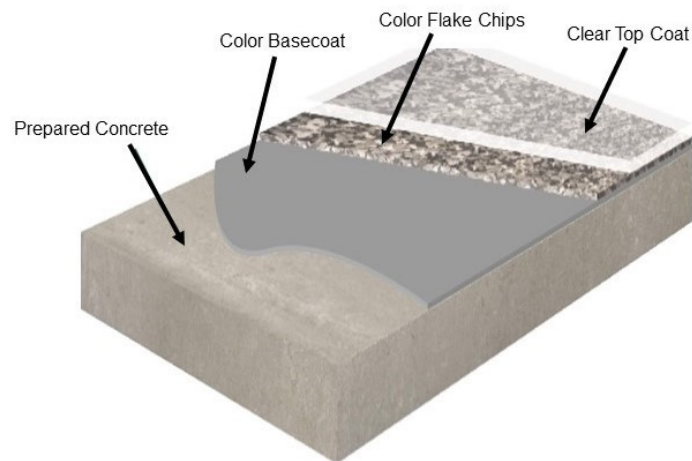
SUPERIOR QUALITY AND EASE OF USE MAKE SS-EZCOAT THE RIGHT RECOAT

THE SURECOAT SYSTEMS DIFFERENCE

SureCoat Systems EZCoat (SS-EZCoat) is a Single Component Polyaspartic Floor Coating that eliminates many of the associated issues with traditional two component floor systems by removing the pot-life concerns and providing 45-50 minutes of working time. SS-EZCoat has exceptional physical properties, excellent self leveling capabilities, strong chemical resistance, along with excellent adhesion.

THE SS-EZCOAT, BASECOAT & TOPCOAT

SS-EZCoat can be tinted to be used as a base-coat, this insures system compatibility and ease of use. The pigment is pre-measured in ready to use containers so no measuring is required. SS-EZCoat pigment is added to clear SS-EZCoat to create the color basecoat.



PHYSICAL PROPERTIES

SS-EZCoat physical properties are comparable with two component Polyaspartic products, providing high tensile strength, high surface hardness and high abrasion resistance. SS-EZCoat is designed for ease of use while not giving up any quality or durability. Once you use the product you'll see the benefits. Review the SS-EZCoat data sheet for additional information.

APPLICATION PROCESS

The application process of SS-EZCoat is similar to other products without the mixing, pot-life and short working time issues. Surface preparation is a key component to a successful application. The concrete must be prepared to industry standards in accordance with NACE and SSPC guidelines.



SURFACE PREPARATION

Surface preparation is the key element for long term success. The concrete surface must allow the coating to penetrate into the surface of the concrete to create a strong mechanical bond.

SURFACE PREPARATION METHODS

Acid etching, grinding, bead blasting and light sandblast are acceptable preparation methods. Proper surface preparation will insure a successful outcome. The concrete must be prepared to industry standards in accordance with NACE and SSPC guidelines.

CONCRETE CRACK AND SPALL REPAIR

Crack in concrete slabs can be repaired with SureCoat Systems Concrete Crack Filler (SS-CCF). SS-CCF is a low viscosity and high-strength crack repair product. This material has been specially formulated to strongly bond to concrete to fill and repair cracks, and spalls in concrete. SS-CCF cures in about 10 minutes and can be used alone or color matched with aggregate to repair crack spalls and to fill concrete floor control joints. See SS-CCF data sheets for complete details. Filling the control joints in the concrete is optional, control joints are designed to crack and may eventually show through the coating systems.

MOISTURE VAPOR TRANSMISSION (MVT)

MVT is simply liquid water that rises through the pores in concrete which can cause problems for coatings, adhesives and flooring materials. SureCoat Systems Deep Penetrating Densifiers (SS-DPD) can be used to stop MVT and strengthen the concrete. See SS-DPD data sheets for complete details.

PRIMER

The right primer can guarantee better adhesion of your floor coating to the substrate, a more uniform application and color spread. It will give your floor a longer life and will reduce the risk of the floor coating chipping or breaking.

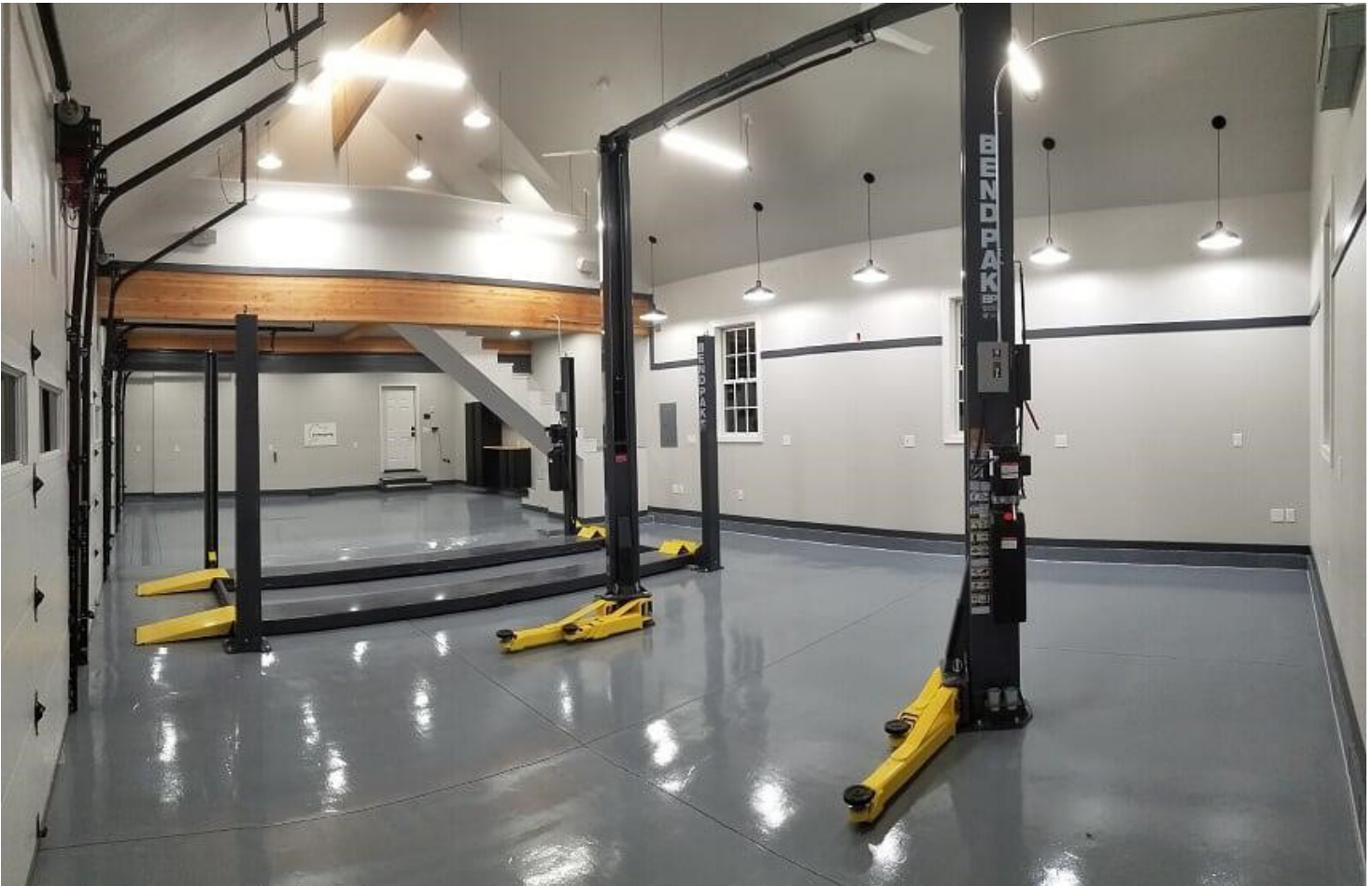
RETURN TO SERVICE

SS-EZCoat tack free time is 2-3 hours. Light foot traffic is acceptable within 8-12 hours. Wheel traffic and vehicle parking acceptable within 48-72 hours. Any residual odor dissipates within 24-48 hours depending on air flow in the garage.

SureCoat Systems EZCoat

SINGLE COMPONENT FLOOR COATING

100% UV STABLE



ADDITIONAL SS-EZCOAT INSTALLATION OPPORTUNITIES

- ✓ Body Shop Floors
- ✓ Office Hallways
- ✓ Parking Structures
- ✓ Office Floors
- ✓ Firehouse Floors
- ✓ Bathrooms
- ✓ Warehouse Floors
- ✓ Residential Garage Floors
- ✓ Stock Room Floors
- ✓ Manufacturing Floors
- ✓ Loading Docks
- ✓ Epoxy System Topcoat
- ✓ Locker Room Floors
- ✓ Retail Floors