



## The SureCoat Wall System Installation Steps StrucSureCoat 877/823-7873

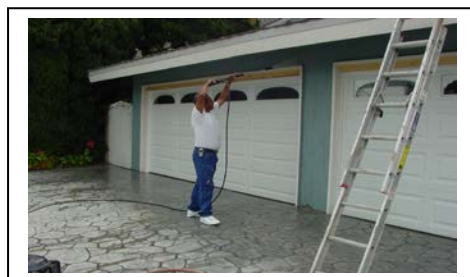
1. **Inspect** the entire exterior of building to identify problem areas that will need to be repaired or treated prior to coating. Replace any substrate that may be damaged such as dry rotted fascia boards or soffit wood; twisted fascia boards; stucco that is missing; or texture that is missing.



2. **Trench** around the perimeter of the building approximately 4" to 6" to expose the foundation.



3. **Clean** surfaces by using a power washer to remove all dirt, loose stucco, paint and mold. Be careful not to use too much force and unnecessarily remove stucco or paint.





## Installation Steps for the SureCoat Wall System StrucSureCoat

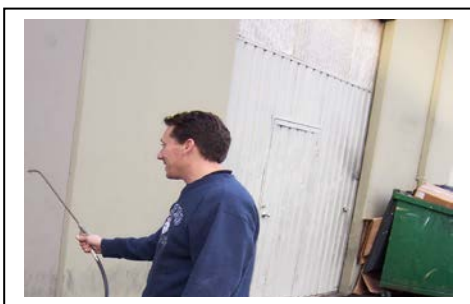
4. **Prepare** the wall surface to receive the coating by filling all small cracks with the *StrucSureCoat* material by firmly rolling *StrucSureCoat* into the cracks with a nap roller. For larger cracks, our elastomeric joint filler can be used. Repair all damaged and missing stucco with Portland cement-based stucco. Be sure to re-texture all repaired areas to match the texture of the rest of the building or house. The coating will take on the appearance of the surface over which it is applied. Replace any dry rot or termite-damaged wood. Resurface any splintered or rough wood to the desired texture prior to coating. If new wood is replaced in the soffit or fascia areas, a single coat of *StrucSureCoat* should be applied before coating.



5. **Mask** off the windows and doors that are not to receive coating using a lightweight plastic and painters tape or masking tape.



6. **Apply** *SS-1007* to all patches, repairs, damaged areas and the exterior of the building stucco from the bottom 3' up. Or **if a primer is desired** due to chalking, water issues or other condition that would require a primer, or if the surface is porous or soft, *SS-1007* is used to increase density and provide a solid surface to adhere the *StrucSureCoat*. *SS-1007* can be applied with a Hudson sprayer at a rate of 1 gallon per 75-150 square feet depending on porosity (See Application Guide for details). *SS-1007* must be allowed to cure for 1-7 days, depending upon temperature, humidity and density of the concrete, and rinsed before any other type of surface material is applied.





## Installation Steps for the SureCoat Wall System StrucSureCoat

7. **Apply *StrucSureCoat*** to the exterior of the building using an airless sprayer with a .33 tip. When going over a heavy texture such as Spanish lace, the material should be back rolled using a heavy nap roller. Beginning at the upper end corner of the building, slow even passes should be made in each area allowing an application of 2 to 2.5 gallons per 100 square feet for a total of 20-25 mils DFT depending on the wall texture. **The finish should be pinhole free on all surfaces.** A light fog coat at the end of the completed applications gives it a nice uniform look, which is aesthetically pleasing to the customer. **\*\*Touch ups should be done from corner to corner on any surface for uniform appearance.**



8. **Apply *StrucSureCoat*** to the fascia boards and other wood trim areas with a paintbrush. You can also use an airless to spray the soffit and trim areas. **\*\*Touch ups should be done from corner to corner on any surface for uniform appearance.**



9. **Clean Up** – Complete all touch ups and haul away all debris and supplies.

